

INTRODUCTION TO THE ENDOCRINE GLANDS

H. Spencer Lewis, FRC

The Rosicrucians have maintained for centuries that the glands act like guardians of the lives of human beings.

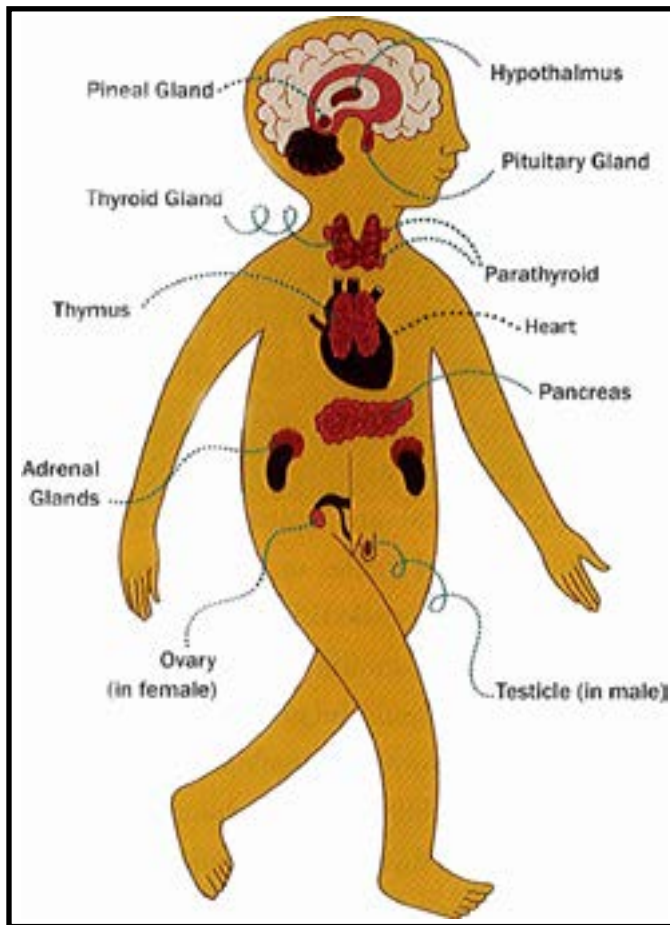
We are functioning in our earthly existence as dual beings, and there is a spiritual self within our physical body. This spiritual self is there for the purpose of giving us intellectually a sense not only of divine wisdom and divine mastership over earthly conditions, but to guard and control the perfect operation of our physical bodies. Therefore, we must realize that there must be also some means of exchange or communication between the spiritual self and the physical self. In other words, there must be some places or points within the human body where the spiritual power, self, and intelligence can transmute its power, authority, and control into the grosser elements of nerve energy, blood, vitality, and human mechanism so that the higher, finer, almost intangible and imperceptible forces of the divine self may be brought down to a rate of vibrations and a form of power crude enough, or material enough, to function through the flesh and bones and other material, chemical elements that constitute our bodies.

The glands have been found to be these intercommunicating instruments, these transformers, or transmuters between the spiritual, divine, Cosmic self and the grosser, earthly, and physical self. They bring about within us a divine alchemy. For many centuries, the most eminent mystical scientists, who made a very serious study of the rhythmic, synchronous functioning of both the divine and physical self in the human body, believed that the pineal and pituitary bodies, now known to be glands, were the only actual physical, material organs for such transmutation of a higher

force and energy into a more material force. On the other hand, there were those who believed that the solar plexus was a gland of great importance, having the function of interpreting and transmuting the higher, inspirational, Cosmic, or spiritual emotions within us into the grosser, material, and emotional reactions.

For a century or more the solar plexus was somewhat worshipped and adored as the seat and soul of all human higher activities. But when it was discovered that the spiritual element within us is to be found in every living cell of every part of bone, tissue, and blood, and that the soul and human emotional nature are not located in one organ or one part of the body, it became necessary to study human physical anatomy more carefully. Then the many other glands were discovered and given proper attention.

Speaking of the emotional centers of the human body again, we have found, as have scientists and medical researchers, that the spleen is just as reactive and just as demonstrative of the emotional functions of our mental, psychic, spiritual, and physical existence as is the solar plexus. This, too, was discovered many centuries ago, and for that reason many popular phrases were invented by the more or less ignorant laymen whereby they expressed the idea that one who was despondent or unhappy or cranky was manifesting a bad spleen. But it is also true that no part of our spiritual and physical composition can be out of order or out of harmony with the Cosmic rhythm or with the Cosmic flow of vibrations without our emotions reacting and manifesting the inharmonious attunement.



From many mystical and spiritual points of view, the pituitary and pineal bodies or glands may be quite important in certain so-called “psychic” reactions. No one knows better than do the Rosicrucians that these two glands or bodies should be given careful thought in connection with many forms of development of the latent spiritual, or Cosmic, abilities of the human being. But then again there is the thyroid gland which, while it does have a considerable importance in connection with the development and growth of the physical human body, and from the physical, medical point of view may be closely related with certain forms of malignant or toxic conditions that are subnormal or abnormal, on the other hand, is important in certain forms and degrees of psychic or spiritual development.

It is not necessary for every individual to become mystically inclined or to be given to the study and reading of mystical,

spiritual, or religious subjects in order to be benefited by a very careful study of the glands within the human body. Our human countenances, our human attractiveness, and most essentially that intangible something called human personality or personal magnetism, are the result of the normal and proper functioning of the glands. And that which attracts one person to another is something more than the mere definiteness of the handclasp or the deliberateness of the smile, or the wiles of the pleasant words that are spoken.

By knowing our glands and how they function, and by knowing how to live properly, which includes eating, drinking, and breathing properly as well as thinking properly, we can permit these glands to do their very best, and give us every advantage of their divine functioning.

